

AUTOMATIC DOOR SYSTEMS WITH **SMOKE AND FIRE PROTECTION**



BARRIER-FREE ACCESS THAT CAN **WITHSTAND TRIAL BY FIRE**

There are measures you can take to reduce the fear of fire and its catastrophic consequences. Automatic smoke and fire safety solutions prevent fire and smoke from spreading, helping to protect people and the interior of the building. Tried-and-tested solutions from Gilgen Door Systems offer convenient access and ensure a high degree of safety, even in barrier-free buildings. In the event of a fire, the doors close automatically and prevent the flames from spreading for at least 30 minutes.

Contents

Planning	page 05
Smoke and fire-rated sliding doors	page 06
Fire-rated, TÜV-approved swing door drive unit	page 08
Testing/approval	page 11

Safely containing fire and smoke

Structural fire safety measures cannot prevent fires from occurring. Fire safety doors from Gilgen, however, ensure that a fire is limited to as small an area as possible. Automatic fire barriers offer the usual convenience while preventing flames from spreading to other parts of the building in the event of a fire.



Fire-rated sliding doors

Automatic Gilgen fire-rated sliding doors offer a convenient, virtually invisible access point in simple day-to-day use and – in the event of a fire – protection from flames and smoke thanks to the TÜV-approved fire barrier. Depending on the variant, these doors are also approved for emergency exit/rescue access use.



Fire and smoke-rated sliding doors

When it comes to preventing toxic smoke fumes from spreading within a building, self-closing smoke-rated doors are indispensable. Combined with the fire safety function, these solutions also offer effective protection against the spread of flames.



Fire-rated swing doors

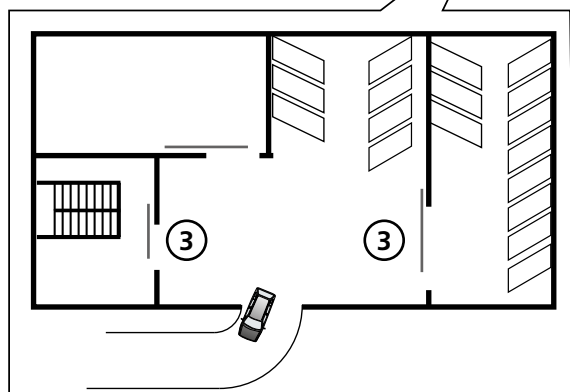
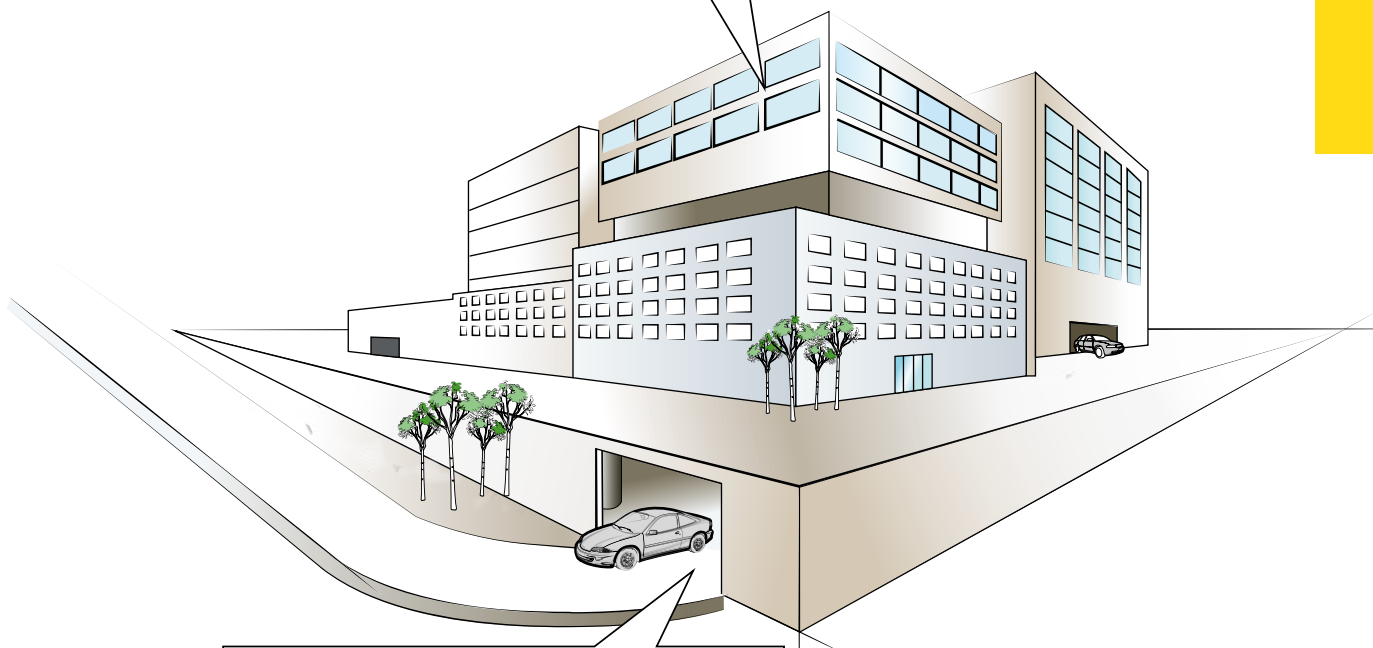
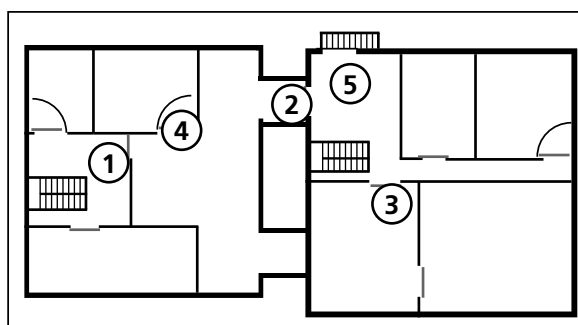
Gilgen Door Systems not only stands for top functionality but also for design and individuality. Our swing doors ensure barrier-free access between your rooms – combining convenience, hygiene and, of course, an attractive look.



FIRE PROTECTION BEGINS WITH PLANNING

New build or renovation – your planning has to include fire barriers and emergency exits. Structural fire safety measures incorporate all measures designed to prevent fires, limit their spread and, in an emergency, ensure an escape route/rescue access.

- 1 Fire-rated sliding door
- 2 Fire-rated sliding door with Break-In/Break-Out
- 3 Fire and smoke-rated sliding door
Smoke-rated sliding door
- 4 Fire-rated swing door
- 5 Swing door smoke extraction



SLIDING DOORS WITH SMOKE AND FIRE PROTECTION

A good fire-rated automatic sliding door is not only impressive in the event of a fire but in day-to-day use too. Gilgen doors deliver top quality, the highest safety standards and compliance with statutory guidelines. Thanks to a diverse range of additional functions, our TÜV-approved doors offer virtually endless possibilities.



In day-to-day use smoke and fire-rated automatic sliding doors offer the convenient advantages of automatic doors: contactless, barrier-free access.

In the event of fire our fire-rated automatic sliding doors help slow the spread of the flames. The doors divide your premises into separate sections and reduce the risk of fire spreading throughout the building.

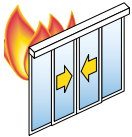
If smoke is detected the smoke-rated automatic sliding doors close instantly to ensure reliable smoke control. The premises are also sectioned into separate smoke zones to prevent the smoke from spreading further.

In an emergency our doors provide a life-saving emergency exit. Our fire-rated automatic sliding doors with emergency exit function can be opened manually like a swing door in the event of fire – ensuring a safe escape route.



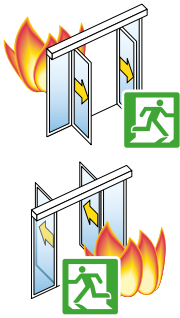
How does a fire safety door function in an emergency?

If a smoke/fire alarm is triggered in your building, the complete sliding door installation closes slowly and securely. The same applies in the event of power failure. In the safe CLOSED position the sliding door leaves lock mechanically.



Fire-rated sliding door

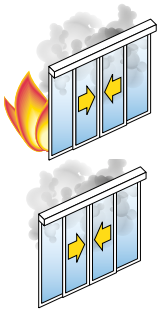
In an emergency, all you have to do is briefly press the illuminated manual switch next to the sliding door. The sliding door will open briefly and automatically close again immediately afterwards.



Emergency exit with BREAK-IN/BREAK-OUT

Normality and familiar procedures are particularly helpful in an emergency. The sliding door leaves can therefore be opened up like a swing door in an emergency. This provides an escape route, and the mechanical door closers ensure that the fire barrier is then closed again. The choice is yours: the emergency exit function can be activated at any time or only triggered in the event of fire.

- Standard door handle (one side or both sides)
- Door handle as per EN 179
- Pushbar as per EN 1125 (only with BREAK-OUT)

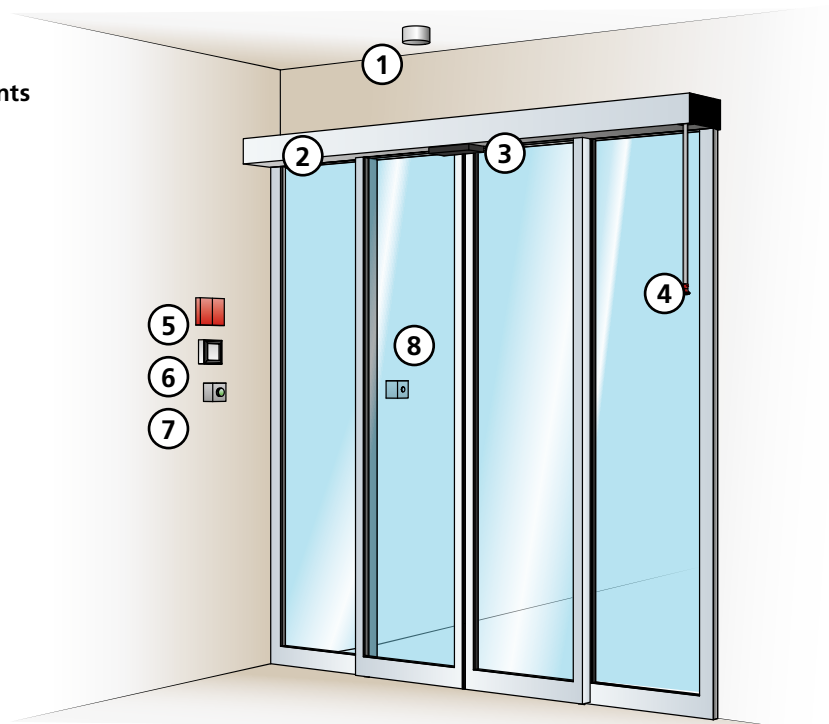


Fire/smoke-rated sliding door

If battery closure is permitted in your country, you can actuate and close your doors using emergency operating mode with battery and charge monitoring. Alternatively, a SCHNETZ closing device is available for your complete sliding door installation. In both cases, Gilgen doors deliver top quality and the highest safety standards.

Additional components for fire-rated automatic sliding doors

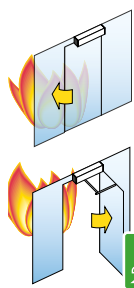
- 1 Individual smoke detector
- 2 Drive mechanism with additional components
 - Running carriage lock
 - Emergency battery or Schnetz closing device
 - Additional control with ports for:
 - Smoke detectors (max. 3)
 - Fire alarm system
- 3 Opening and safety sensor
- 4 Manual unlocking
- 5 Test and reset button
- 6 Control panel
- 7 Push-button
- 8 Key-operated impulse switch



SWING DOOR DRIVE UNIT

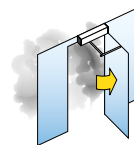
FIRE-SAFETY TESTED

As you would expect, the swing door drive unit securely closes your door from any position if a fire alarm is triggered. And the closed door can be opened manually to create an escape route. Additional plus points: the doors open and close particularly quietly and are extremely durable. And the universal drive mechanism makes installation straightforward.



The swing door closes in the event of a fire alarm

- Option of single and bi-parting doors
- With integrated smoke detector
- Spring-powered closure in the event of fire or power failure
- Safe emergency exit/rescue access
- Simple reset on side cover following fire alarm
- LED display for fire alarm integrated in side cover
- Bi-parting doors with continuous covering and integrated mechanical closing sequence regulator

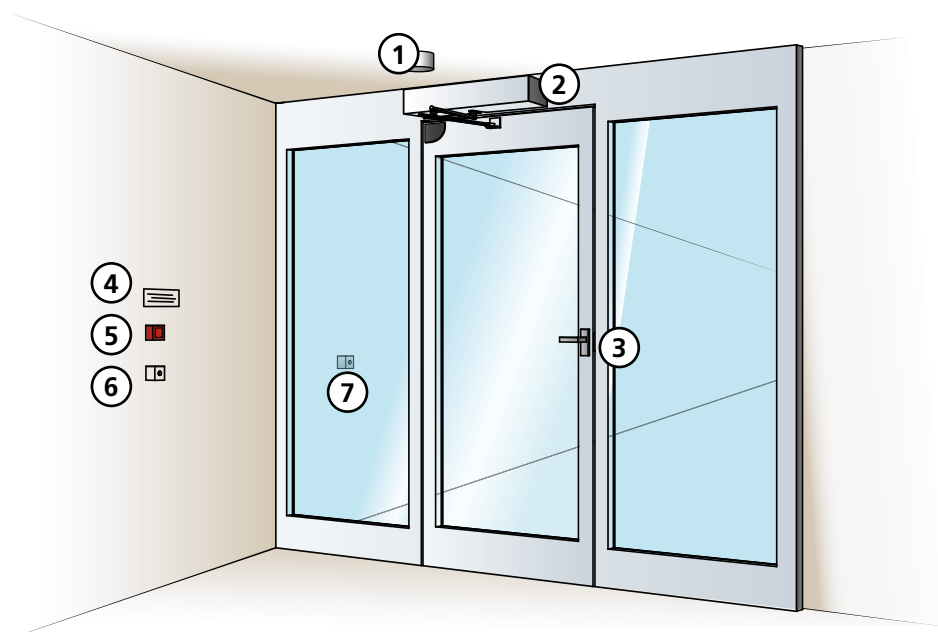


The swing door opens for smoke extraction

- With integrated smoke detector
- Bi-parting doors with continuous covering
- 'Inverse' function – power-off opening for smoke extraction (SHEV systems, not for doors with fire protection requirement)

Additional components for fire-rated automatic swing doors

- 1 Fire detector
- 2 Drive mechanism
- 3 Electric door opener
- 4 Information notice about fire safety door
- 5 Manual release button
- 6 Push-button
- 7 Key-operated impulse switch





Radiologie





TESTED AND APPROVED FOR FIRE SAFETY

When it comes to safety and long-lasting functionality, Gilgen fire safety solutions are an indispensable part of your construction concept. The special solutions available offer you the latest technologies for your building, tested for compliance with the applicable standards.

Testing and approvals

- Fire safety, tested to EN 1363-1 and EN 1634-1
- User safety, TÜV-tested to EN 16005 and DIN 18650
- Emergency exit fittings as per EN 179 or EN 1125

Please note country-specific approvals:

Fire-rated sliding door	Switzerland VKF UK: bre Austria: ibs Czech Republic
Smoke and fire-rated sliding door	Switzerland VKF Germany: DIBt
Smoke-rated sliding door	General building inspectorate test certificate (ift Rosenheim)
Swing door drive unit	Germany: DIBt France: CNPP UK: Warringtonfire Hong Kong: FORTE

Head Office
Gilgen Door Systems AG
Freiburgstrasse 34
CH-3150 Schwarzenburg
Tel. +41 (0)31 734 41 11

Vertrieb Schweiz
Gilgen Door Systems AG
Untermattweg 22
CH-3027 Bern
Tel. 0848 80 44 88

Gilgen Door Systems Germany GmbH
Hauptstraße 63
DE-77815 Bühl
Tel. +49 (0)7223 80887610

Gilgen Door Systems Austria GmbH
Concorde Business Park 1 / E / 1 / 4
AT-2320 Schwechat
Tel. +43 17 06 58 66

Gilgen Door Systems France S.à.r.l.
2-12, rue du chemin des Femmes
Immeuble Odyssee - C
FR-91300 Massy
Tel. +33 1 70 84 90 45

Gilgen Door Systems UK Limited
Securiparc House, Wimsey Way,
GB-Alfreton, Derbyshire, DE55 4LS
Tel. +44 800 316 6994

Gilgen Door Systems Italy S.r.l.
Via della Fisica, 4
IT-40068 San Lazzaro di Savena (BO)
Tel. +39 051 70 49 45

Global sales partners can be found at
www.gilgendoorsystems.com/location